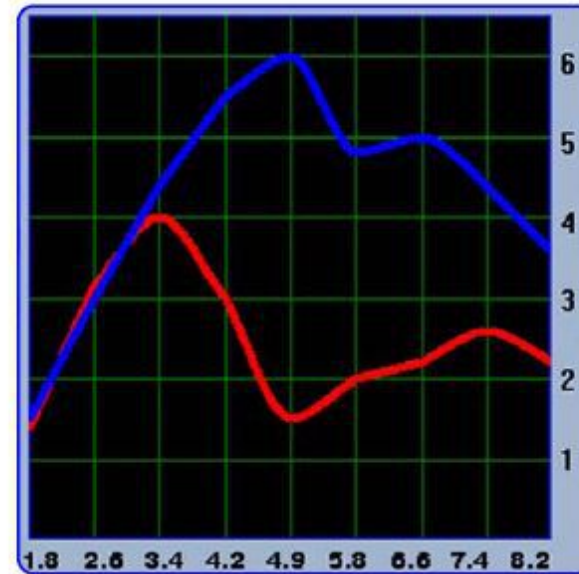
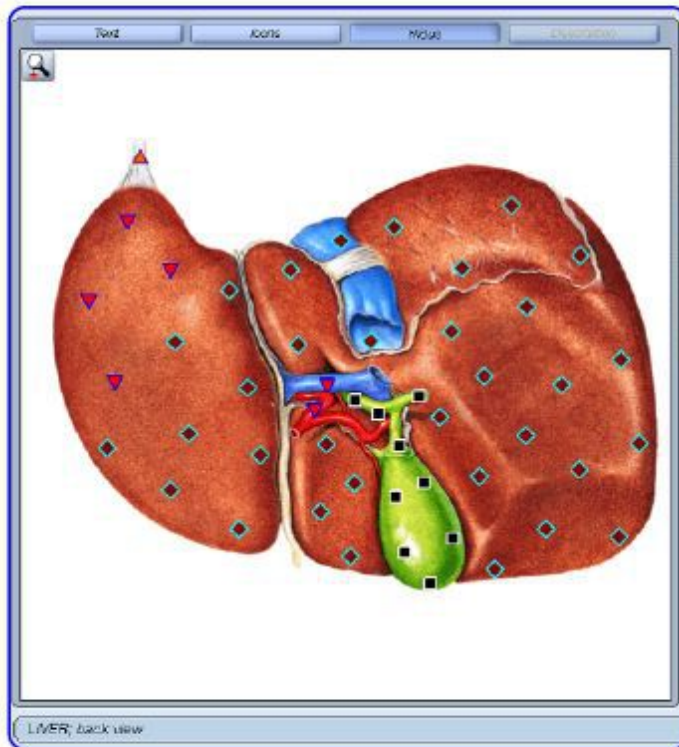




Bioplasm-NLS

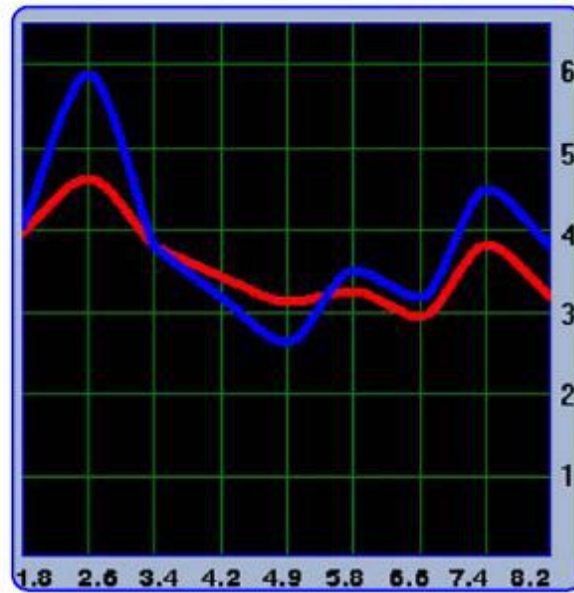
The Spectrum Case

Etalons



Liver abscess

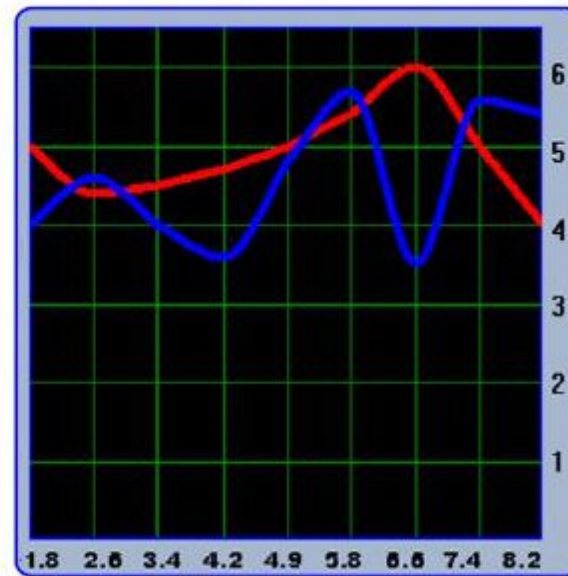
Thus, acute inflammatory processes have high amplitude sawtooth waveform graph with a considerable dissociation between the input and output signals. The graph isoline is in the range of 2-3 scale divisions.



Pyrophosphate arthorathy



With subacute processes the graph voltage decreases, the graphs become level and the isoline reaches 3-4 scale divisions high.

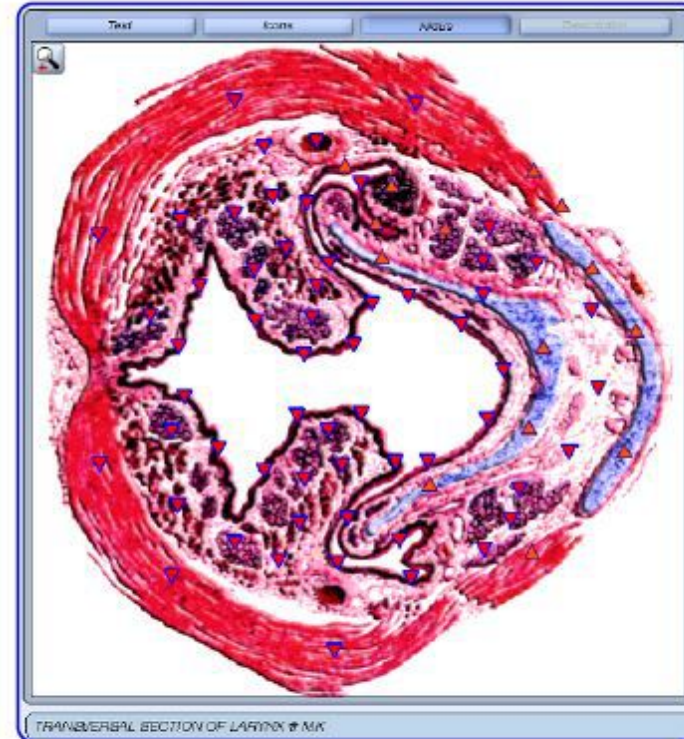


Chronic interstitial pneumonia

With chronic processes the voltage decreases still more, the graphs take on a smoother shape and the isoline reaches the value 4-5.



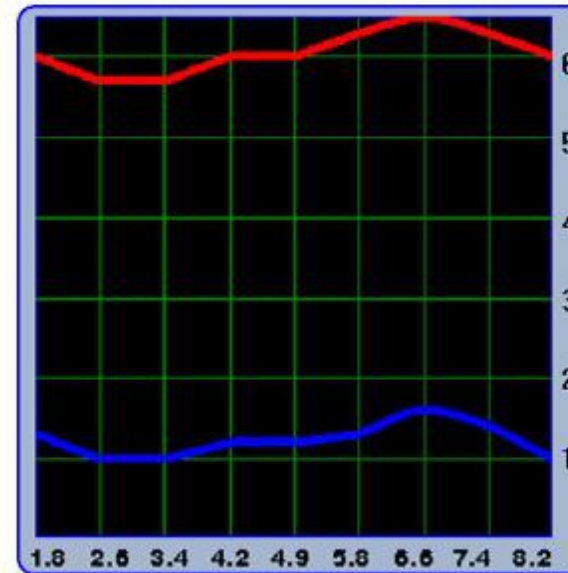
Larynx adenoma



Benign tumors are characterized by a high isoline in the graph (4-5 divisions) and a tendency towards a growing amplitude of the input signal as compared to the output one.



Etalons



Hypophysis adenocarcinoma

Malignization processes are characterized by practically level graphs with minor peaks in the area of the natural frequency of an organ and a low amplitude (1-1.5) of the output signal along with a high amplitude (5-6) of the input one.